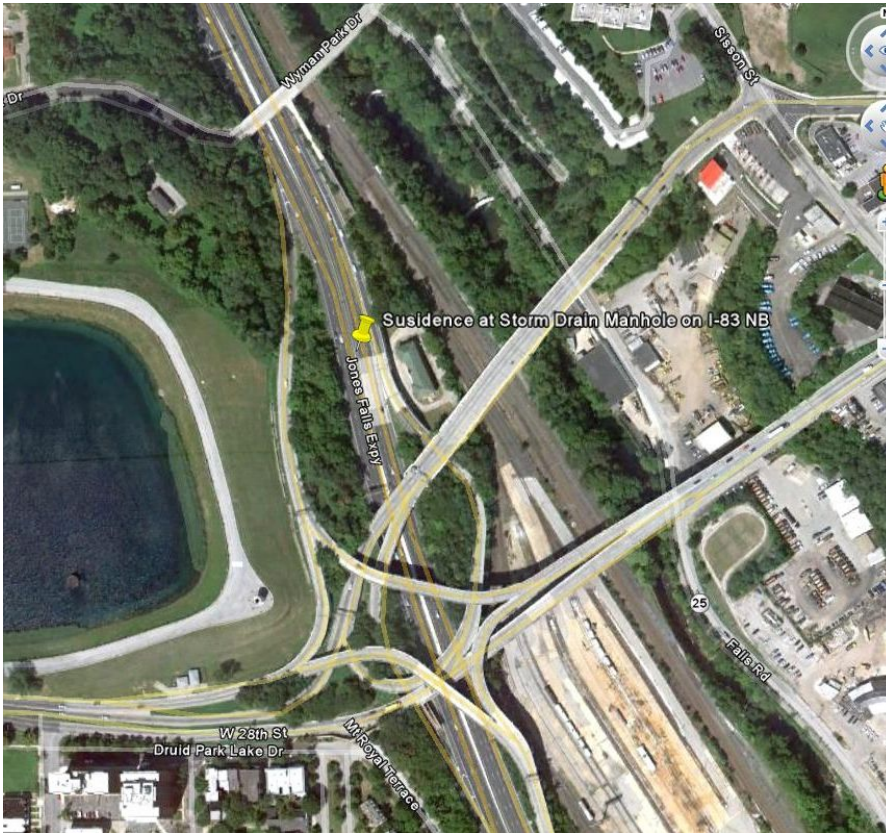


I-83 Emergency Shaft Baltimore, MD



PROJECT OVERVIEW AND CHALLENGES

Bradshaw Construction made emergency point utility repairs for 15 inch and 18 inch reinforced concrete in the median of I-83 in Baltimore, MD. A 24 foot, outer diameter, shaft which encompassed an active manhole was excavated and shored with steel liner plates to a depth of 24 feet. Bradshaw's scope included excavating and installing the shaft supports, replacing the broken pipes and backfilling the shaft. All work was performed on a 24-7 basis.



PROJECT INFORMATION - 517

OWNER:

Baltimore City
Department of Transportation
(410) 396-6802

ENGINEER:

Rummel, Klepper, & Kahl, LLP
Steve Phillips
(410) 728-2900
sphillips@rkk.com

CONTRACTOR:

John W. Brawner Contracting Co.,
Inc.

COMPLETION DATE:

5/9/2012

GEOLOGY:

Silty Sand & Silt

EXCAVATION METHOD:

Hand Mine

MINING DIMENSIONS:

24' x 24VF

FINAL LINING:

Steel Liner Plate

FOR MORE INFORMATION:

Doug Piper, Chief Estimator
(410) 970-8300
dpiper@bradshawcc.com
Refer to Project 517