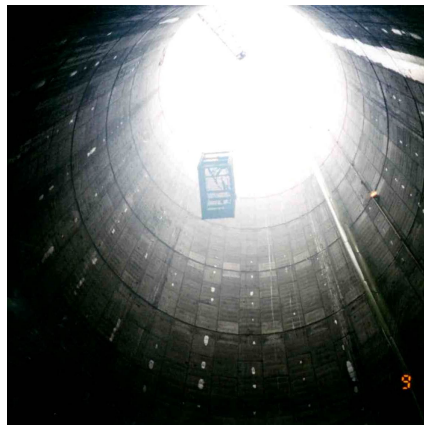


## East Bay/Calhoun Drainage Facilities Division I - Collection Tunnel System Charleston, SC



### PROJECT OVERVIEW AND CHALLENGES

BTM Joint Venture, led by Bradshaw Construction, managed the construction of two (2) cast-in-place caisson shafts constructed in downtown Charleston, SC. The project was the first phase of flood control instituted by the City. The first caisson was 30' ID x 150' deep at Concord St and served as a tunnel mining shaft and future pump station. The second caisson was 16' ID x 130' deep in Marion Square Park on Calhoun St and served as the TBM receiving shaft and future mining shaft. Both caissons were reinforced concrete cast in 10' lifts. Excavation was subaqueous in Charleston "plough" muds down to 50'-70' to the Cooper Marl clays and performed by a crane with clamshell. The biggest challenge overcome was progressing safely through the soils interface into the clays where free air excavation was used. Once the caissons were installed, a 120 inch rib and board TBM tunnel was mined for a 96 inch cast-in-place concrete storm drain.



### PROJECT INFORMATION - 1JV1

**OWNER:**

City of Charleston  
Laura Cabiness  
(843) 724-3761

**ENGINEER:**

Davis & Floyd Engineering, Inc.  
Herb Gilliam  
(843) 554-8602

**CONTRACTOR:**

BTM Joint Venture - Bradshaw  
Construction Managing Partner

**CONTRACT VALUE:**

\$4,368,139.00

**COMPLETION DATE:**

6/14/1996

**GEOLOGY:**

Silts and sands over Cooper Marl  
(clay)

**EXCAVATION METHOD:**

Sunken Caisson  
Crane & Clam Shell

**MINING DIMENSIONS:**

16' x 130VF & 30' x 150VF

**FINAL LINING:**

Cast in Place Steel Reinforced  
Concrete

**FOR MORE INFORMATION:**

Lester Bradshaw, Jr, President  
(410) 970-8300  
lester.bradshaw@bradshawcc.com  
Refer to Project 1JV1