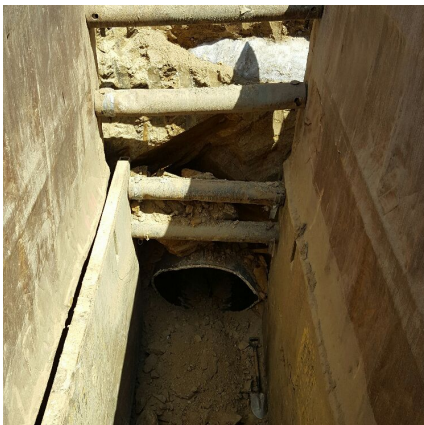


## Glenmont Rock Handmine Wheaton, MD



### PROJECT OVERVIEW AND CHALLENGES

Our client had concerns about breaking rock with a hoe ram so close to an existing water main. Instead, Bradshaw installed two tunnels hand mined through rock under the existing water main. The first one went so well that a second tunnel was added after the first one was completed. The rock was removed via drilling and splitting with pneumatic breakers, and then a steel sleeve was installed as a casing for the carrier pipe.



### PROJECT INFORMATION - 559

#### OWNER:

Winchester Homes  
301-803-4800  
info@winchesterhomes.com

#### ENGINEER:

N/A

#### CONTRACTOR:

Utilities Unlimited, Inc.

#### COMPLETION DATE:

4/15/2016

#### GEOLOGY:

Rock

#### EXCAVATION METHOD:

Handmine

#### MINING DIMENSIONS:

7' & 15' x 36" x 36"

#### FINAL LINING:

52.5" Steel Casing

#### FOR MORE INFORMATION:

Doug Piper, Project Manager  
410-970-8300  
dpiper@bradshawcc.com  
Refer to Project 559