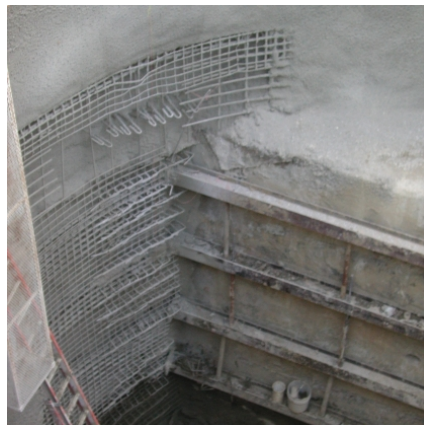


## Pentagon Metro Entrance Facility Washington, DC



### PROJECT OVERVIEW AND CHALLENGES

The Metro Entrance Facility was a security-driven project designed to eliminate the direct entry to the Pentagon from the Metro tunnel and provide a secure screening facility for Pentagon visitors. As part of the project, a 50' deep elevator was constructed between the existing underground station and connecting to the existing escalator passage for handicap access. Bradshaw was selected to design-build the unique elevator shaft. Teamed up with Jenny Engineering, who designed the eccentric shaft, Bradshaw excavated & supported the sand & gravel deposits with a 34' diameter SEM type shaft using lattice girders, wire mesh & shotcrete. The shaft was truncated on either side as it was excavated against the existing station and escalator passage requiring heavy beams and extra shotcrete.



### PROJECT INFORMATION - 388

#### OWNER:

Pentagon Renovation Office  
Wendy Thompson  
703.693.8965

#### ENGINEER:

Jenny Engineering  
Prakash Donde  
973.379.6699

#### CONTRACTOR:

Hensel Phelps

#### COMPLETION DATE:

3/22/2002

#### GEOLOGY:

Sand, Gravel

#### EXCAVATION METHOD:

SEM/NATM

#### MINING DIMENSIONS:

34' Ø x 50VF

#### FINAL LINING:

N/A

#### FOR MORE INFORMATION:

Eric Eisold, Vice President  
410.970.8300  
eeisold@bradshawcc.com  
Refer to Project 388